



CHICAGO  
PASTEL  
PAINTERS



# STROKIN' VI!

SIXTH BIENNIAL MEMBER JURIED EXHIBITION

Friday, September 30 – Sunday, October 30, 2016

**CHICAGO PASTEL PAINTERS  
OFFICERS & COMMITTEE  
CHAIRS 2016**

**PRESIDENT**

Tatijana Jacenkiw, CPP-M

**VICE-PRESIDENT**

Brian Sauerland, CPP-D

**EXHIBITIONS**

Mike Barret Kolasinski, CPP-M

**TREASURER**

Arlene Tarpey, CPP

**SECRETARY**

Evelyn Brody, CPP

**NEWSLETTER**

Dotty Carringi, CPP

**WEB DESIGN**

Randy Karey

**MEMBERSHIP**

Pat Hagle

**PUBLIC RELATIONS**

Nancie King Mertz, CPP-M

**PRESIDENT EMERITUS**

Jessica Fine, CPP-M

**SPECIAL  
THANKS TO  
OUR DONORS**

ArtDeTriumph &  
Artful Framer Studios

Apple Frame Studio

Blick Art Materials

Chicago Botanic  
Garden

Jack Richeson & Co.

Mike & Kathie Newman

Morton Arboretum

Old Town Triangle  
Art Center

Palette & Chisel

Prismacolor

WunderLand

**STROKIN' VII!**

**SIXTH BIENNIAL MEMBER JURIED EXHIBITION**

Friday, September 30 – Sunday, October 30, 2016

**OPENING RECEPTION & AWARD CEREMONY**

Friday, September 30 • 6:00–9:00pm

**ART AND COMPANY**

15609 South 94th Avenue  
Orland Park, Illinois 60462  
[www.artandcompany.net](http://www.artandcompany.net)

For more information:

[www.ChicagoPastelPainters.org](http://www.ChicagoPastelPainters.org)



COVER IMAGE  
Mary Lynn Sullivan  
*Red Pajamas*  
pastel  
8 x 8

CATALOG DESIGN  
Dotty Carringi

A society of professional artists dedicated to the promotion and  
exhibition of the medium of pastel in the Chicagoland area.  
[www.ChicagoPastelPainters.org](http://www.ChicagoPastelPainters.org)

## PRESIDENT'S NOTE

The Chicago Pastel Painters welcomes everyone to our Fifth Biennial Member Juried Exhibition, Strokin' VI!

Because of the sheer size of the Chicagoland area and the fact that we have members scattered throughout the city and suburbs we make an effort to move the venues for our exhibitions not only to accommodate our members, but to share our work with different communities.

This year we are especially beholden to The Art & Company, to Don Glassner and Lynn for hosting this event. They went out of their way to make us feel welcome!

We are grateful to our donors for their contributions and their support of our society.

We are thankful to all the members who make this event a reality.

This year we followed the precedent we set for our last member's show when we ventured outside the pastel world and into Chicago's art scene for our juror of selection and judge of awards — local but nationally known artists, Sergio Gomez and Clayton Beck III. Both attended the opening and provided us with insight and their thoughts.

I congratulate the artists whose work was accepted into this show, but I thank all our member artists for being part of this society, for painting in pastel, for coming together as a group, for supporting each other, for competing, for sharing, for striving to be better.

And as always, I thank the public, artists and art lovers for coming to view our work.

*-tatijana*

CPP PRESIDENT

Tatijana Jacenkiw, CPP-M

## JUROR OF SELECTIONS



Photo Credit: Michael Coakes

### Sergio Gomez

*Sergio Gomez was among the first group of artists who moved to the*

*Zhou B Art Center and started Third Fridays in the Fall of 2004. Currently, he is Curator/Director of Exhibitions at the Zhou B Art Center, Owner/Director of 33 Contemporary Art Gallery and coaches artists to excel in their art careers. Sergio has curated a number of important exhibitions including ten years of "The National Self-Portrait Exhibition," "Chicago's Twelve," and "National Wet Paint MFA Biennial."*

[www.virtualartist.com](http://www.virtualartist.com)

## JUDGE OF AWARDS



### Clayton J. Beck III

*After graduation from the American Academy of Art in Chicago, Clayton*

*studied at the Palette and Chisel Academy of Fine Arts with Richard Schmid. Clayton's career began while still at the American Academy, exhibiting at Jody Kirberger's Talisman Gallery and winning awards from the Midwest Pastel Society, the Palette & Chisel, and the Pastel Society of America. He conducts classes at the Palette & Chisel Academy on a regular basis and is a Master member of the American Impressionist Society.*

[www.claytonbeck.com](http://www.claytonbeck.com)

## ABOUT THE SHOW

Our Sixth Biennial Member Juried Exhibition, Strokin' VI!, was another smashing success with 52 members submitting 142 images for jurying. Our juror of selections chose 50 works from 32 artists, with the exhibit hosted by the Art & Company Design Center in Orland Park, Illinois.

This leads me to my first thank you. Donald Glassner and Lynn Imperiale at Art & Company were tireless in their effort to make this show awesome, from hanging to homemade refreshments! Also big shout-outs go to Tatijana Jacenkiw, Evelyn Brody, Dotty Carrangi, and all the volunteers that without their never-ending help this exhibition doesn't happen. And above all, enormous congratulations to all the accepted members! Their incredible work displayed the high caliber of professionalism needed to show that pastels belong as a viable medium in Chicago's art community.

Artistically yours,

EXHIBITION CHAIR

Mike Barret Kolasinski, CPP-M

## PARTICIPATING ARTISTS



**DARLENE BOCK**  
Lindenhurst, IL  
*Deirdra Reading*  
24 x 18 \$650



**EVELYN BRODY**  
Chicago, IL  
*Enlightenment*  
18 x 24 \$2000



**DOTTY CARRINGI**  
Cary, IL  
*Bon Voyage*  
16 x 12 \$900



**SUSANNE CLARK**  
Viroqua, WI  
*Head of the Table*  
14.5 x 14.5 \$750



**EVELYN BRODY**  
Chicago, IL  
*Blue Bus*  
22 x 16 \$2000



**DOTTY CARRINGI**  
Cary, IL  
*Mia at Eleven*  
16 x 12 \$1200



**DOTTY CARRINGI**  
Cary, IL  
*Masterworks*  
9.5 x 6 \$350



**KRISTIN DIVERS**  
Wexford, PA  
*Phoenix Theatre Rising*  
20 x 16 \$800



**PARTICIPATING ARTISTS**



**GAIL FABER**  
Rockford, IL  
*Cat Therapy*  
8.5 x 12 \$600



**JESSICA FINE**  
Chicago, IL  
*Anxious*  
15 x 13 \$1100



**TED FUKA**  
Mokena, IL  
*Fallen Bark*  
16 x 13.5 \$1000



**WILL GERMINO**  
Palos Park, IL  
*Michigan Ave Bus*  
7 x 5 \$240



**REVEN FELLARS**  
Chicago, IL  
*Poppy Pasture*  
9 x 12 \$350



**JESSICA FINE**  
Chicago, IL  
*Crossing*  
14 x 11.5 \$1100



**WILL GERMINO**  
Palos Park, IL  
*Dueling Sails*  
8 x 10 \$325



**WILL GERMINO**  
Palos Park, IL  
*St Vincent DePaul  
From Fremont*  
10 x 8 \$325

**PARTICIPATING ARTISTS**



**SUE GOMBUS**  
Merrillville, IN  
*Boys Will Be Boys*  
12 x 12 \$1000



**TOM HEFLIN**  
Rockford, IL  
*Whisper Lake*  
10 x 13 \$1500



**MIKE BARRET KOLASINSKI**  
Chicago, IL  
*Upon Further Reflection*  
20 x 16 \$1200



**MICHAEL LATALA**  
Skokie, IL  
*Katlyn*  
22 x 16 \$1300



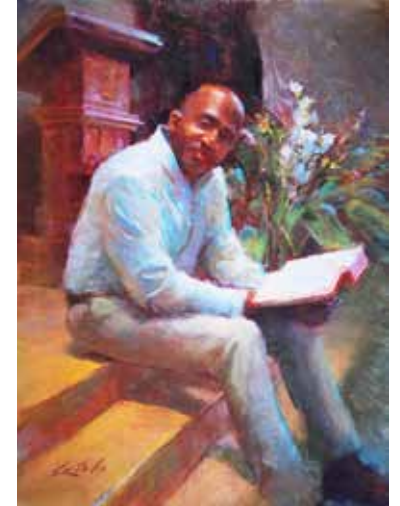
**MIKE BARRET KOLASINSKI**  
Chicago, IL  
*FlowEdge*  
6 x 24 \$800



**TOM HEFLIN**  
Rockford, IL  
*Galena Hills*  
21 x 29 \$3000



**MICHAEL LATALA**  
Skokie, IL  
*Courtney*  
16 x 12 \$1000



**MICHAEL LATALA**  
Skokie, IL  
*Pastor Ray*  
24 x 18 \$1600



**PARTICIPATING ARTISTS**



**CHRISTINE LEONE**  
Olympia Fields, IL  
*Erin Elizabeth*  
10 x 14 \$900



**DAVID LEVENSON**  
Chicago, IL  
*Into The City*  
29 x 43  
2400



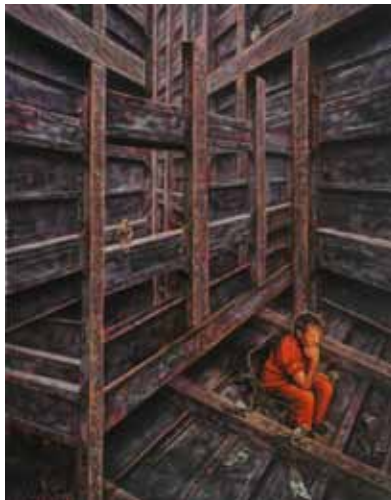
**MIGUEL MALAGON**  
Chicago, IL  
*Kneeling*  
19 x 15 \$800



**NANCIE KING MERTZ**  
Chicago, IL  
*Moments At The Met – Impressions*  
21.5 x 8.25 \$1490



**CHRISTINE LEONE**  
Olympia Fields, IL  
*Gracious Bounty*  
12 x 18 \$1200



**DAVID LEVENSON**  
Chicago, IL  
*The Thinker*  
35 x 32 \$1800



**NANCIE KING MERTZ**  
Chicago, IL  
*Cuba's Inner Beauty*  
42 x 30 \$3600



**DIANA MITCHELL**  
Wheaton, IL  
*Walla Walla Vineyard*  
11 x 15 \$1200

**PARTICIPATING ARTISTS**



**KATHLEEN NEWMAN**  
Palos Park, IL  
*Break*  
12 x 16 \$1200



**MARYANN NOWAK**  
Tinley Park, IL  
*Pondering the Future*  
10 x 13 \$300



**ELLEN ROTTSOLK**  
Wheaton, IL  
*African Woman*  
17 x 12 \$1200



**BRIAN SAUERLAND**  
Palatine, IL  
*Radiance*  
12 x 16 \$895



**KATHLEEN NEWMAN**  
Palos Park, IL  
*Early Snow*  
12 x 16 \$1200



**MARYANN NOWAK**  
Tinley Park, IL  
*The Sky Is the Limit*  
11 x 14 \$300



**DON RYAN**  
Carol Stream, IL  
*Cannonball*  
13 x 10.5 \$900



**JULIE SKODA**  
Western Springs, IL  
*Content*  
12 x 12 \$1100



**PARTICIPATING ARTISTS**



**JULIE SKODA**  
Western Springs, IL  
*Rolling In*  
12 x 12 \$900



**STELLA SOLLIDAY**  
Orland Park, IL  
*Light Patterns*  
12 x 12 \$450



**MARY LYNN SULLIVAN**  
Downers Grove, IL  
*Santa Fe Café*  
8 x 8 \$2500



**ARLENE TARPEY**  
Glenview, IL  
*Down the Path 2*  
14 x 12 \$500



**STELLA SOLLIDAY**  
Orland Park, IL  
*Best Foot Forward*  
11 x 14 \$450



**MARY LYNN SULLIVAN**  
Downers Grove, IL  
*Red Pajamas*  
8 x 8 \$3500



**RUSSELL SUP**  
LaGrange, IL  
*Fall At The Arboretum*  
6 x 12 \$600



MARY ANN TRZYNA  
Frankfort, IL  
*Positive, Negative 3*  
16 x 10 \$390



LIZ WALL  
Palos Park, IL  
*The Boathouse*  
12 x 12 \$500



MARIKAY PETER WITLOCK  
Chicago Heights, IL  
*Water's Edge #40*  
15 x 15 \$1550

AWARD WINNERS

**BEST OF SHOW**

Red Pajamas – Mary Lynn Sullivan

**AWARD OF EXCELLENCE**

Whisper Lake – Tom Heflin, CPP

**CHICAGO PASTEL PAINTERS–  
WUNDERLAND AWARD**

Pastor Ray – Michael Latala, CPP-M

**BLICK ART MATERIALS AWARD**

Water's Edge #40 – Marikay Peter Witlock

**ART DE TRIUMPH & ARTFUL  
FRAMER STUDIOS AWARD**

Down the Path 2 – Arlene Tarpey

**MIKE AND KATHIE NEWMAN–  
PRISMACOLOR AWARD**

Positive, Negative 3 – Mary Ann Trzyna

**JACK RICHESON & COMPANY–  
PALETTE & CHISEL AWARD**

Kneeling – Miguel Malagon, CPP

**APPLE FRAME STUDIO AWARD**

Upon Further Reflection – Mike Barret Kolasinski, CPP-M

**OLD TOWN TRIANGLE ART  
CENTER–PRISMACOLOR  
AWARD**

Cuba's Inner Beauty – Nancie King Mertz, CPP-M

**JACK RICHESON & COMPANY–  
PRISMACOLOR AWARD**

The Thinker – David Levenson

**JACK RICHESON & COMPANY  
AWARD**

Radiance – Brian Sauerland, CPP-M

**CHICAGO BOTANIC GARDEN–  
PRISMACOLOR AWARD**

Gracious Beauty – Christine Leone, CPP-D

**MORTON ARBORETUM–  
PRISMACOLOR AWARD**

Fall at the Arboretum – Russell Sup

**CHICAGO PASTEL PAINTERS–  
PRISMACOLOR AWARD**

Blue Bus – Evelyn Brody, CPP

**CHICAGO PASTEL PAINTERS–  
PRISMACOLOR AWARD**

Mia at Eleven – Dotty Carringi, CPP

**CHICAGO PASTEL PAINTERS–  
PRISMACOLOR AWARD**

Early Snow – Kathleen Newman, CPP-M



*Scenes from the reception and award ceremony of the CPP Strokin' VI! exhibition at Art and Company on September 30, 2016.*



[www.ChicagoPastelPainters.org](http://www.ChicagoPastelPainters.org)