

Join the
Chicago Pastel Painters

Painting the Portrait in
Pastel: 4-day Workshop
with

Saturday, November 11, 2017
through
Tuesday, November 14, 2017
at **Devonshire Cultural Center**
Skokie, Illinois



"I always work in natural light. The most exquisite expression of light I have seen is in the radiance of flesh. The timeless and fleeting human subject as seen in the eternal and ever changing light."

—Ellen Eagle



www.chicagopastelpainters.org

**ELLEN
EAGLE**

elleneagleportraits.com

Fees

\$550 CPP Members

*Registration for existing members open now
through June 30, 2017*

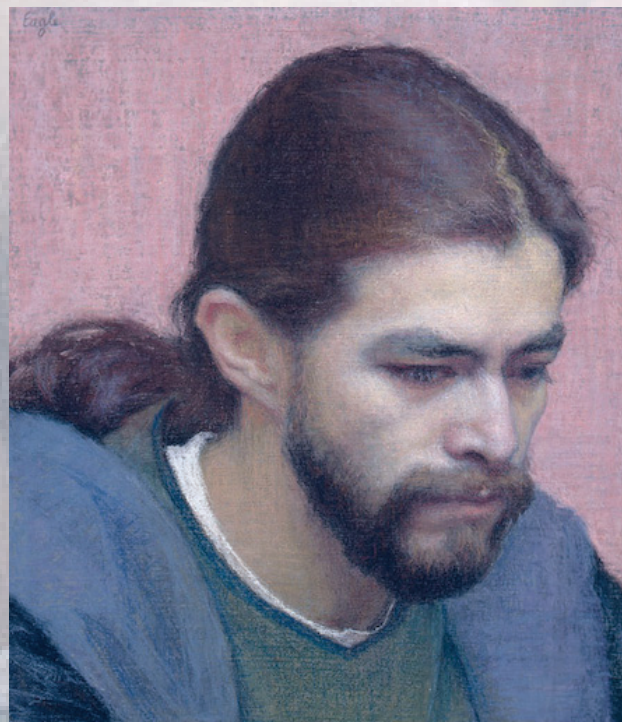
\$585 Non-members

Includes \$35 membership fee.

Non-member registration opens July 1, 2017.

Model Fee *A separate fee for the live models will be shared by the workshop participants.*

Contact Evelyn Brody, 773 883-9021
evelynbrody@icloud.com



Raoul, pastel, 7-1/2" x 6-1/4"



REGISTRATION FORM

Painting the Portrait in Pastel: 4-day Workshop

with **ELLEN EAGLE**

Please make checks for deposit or entire amount payable to "Chicago Pastel Painters" and mail to:

Evelyn Brody

3400 N. Lake Shore Dr. 4E, Chicago, IL 60657

Questions: 773 883-9021

evelynbrody@icloud.com

Please fill out this form and send with your payment:

Name _____

Street _____

City, State, ZIP _____

Phone _____ Cell Phone _____

Email _____

Workshop _____ November 11 to 14, 2017 — Painting the Portrait in Pastel: 4-day Workshop

Workshop Fee: \$550 (members) _____ \$585 (non-members)* _____

Deposit *(required to hold your space. Balance is due no later than October 1, 2017)*

Current Members: \$100 _____

Non-Members: \$135 _____ *(\$35 credited to 2017 membership dues)*

Check# _____ Amount Enclosed \$ _____

Skill Level: Capable Beginner** _____ Intermediate _____ Advanced _____

Signature _____

CANCELLATION POLICY: We understand that circumstances arise causing changes in your plans. We sympathize when such situations occur; however, we must adhere to policies as our financial and contractual commitment for each workshop has been finalized.

- \$100 (\$135 for non-members) non-refundable deposit is required to hold your space in this workshop.
- Balance is due no later than October 1, 2017.
- If balance of workshop is not received by date required, the student's reservation will be cancelled and the space filled with a student from the wait list.

**Fee includes \$35 membership for 2017. Non-members may register beginning July 1, 2017.*

***A Capable Beginner should have knowledge of the pastel medium.*