



CHICAGO
PASTEL
PAINTERS



STROKIN' VI!

SIXTH BIENNIAL MEMBER JURIED EXHIBITION

Friday, September 30 – Sunday, October 30, 2016

**CHICAGO PASTEL PAINTERS
OFFICERS & COMMITTEE
CHAIRS 2016**

PRESIDENT

Tatijana Jacenkiw, CPP-M

VICE-PRESIDENT

Brian Sauerland, CPP-D

EXHIBITIONS

Mike Barret Kolasinski, CPP-M

TREASURER

Arlene Tarpey, CPP

SECRETARY

Evelyn Brody, CPP

NEWSLETTER

Dotty Carringi, CPP

WEB DESIGN

Randy Karey

MEMBERSHIP

Pat Hagle

PUBLIC RELATIONS

Nancie King Mertz, CPP-M

PRESIDENT EMERITUS

Jessica Fine, CPP-M

**SPECIAL
THANKS TO
OUR DONORS**

ArtDeTriumph &
Artful Framers Studios

Apple Frame Studio

Blick Art Materials

Chicago Botanic
Garden

Jack Richeson & Co.

Mike & Kathie Newman

Morton Arboretum

Old Town Triangle
Art Center

Palette & Chisel

Prismacolor

WunderLand

STROKIN' VII!

SIXTH BIENNIAL MEMBER JURIED EXHIBITION

Friday, September 30 – Sunday, October 30, 2016

OPENING RECEPTION & AWARD CEREMONY

Friday, September 30 • 6:00–9:00pm

ART AND COMPANY

15609 South 94th Avenue
Orland Park, Illinois 60462
www.artandcompany.net

For more information:

www.ChicagoPastelPainters.org



COVER IMAGE
Mary Lynn Sullivan
Red Pajamas
pastel
8 x 8

CATALOG DESIGN
Dotty Carringi

A society of professional artists dedicated to the promotion and
exhibition of the medium of pastel in the Chicagoland area.
www.ChicagoPastelPainters.org

PRESIDENT'S NOTE

The Chicago Pastel Painters welcomes everyone to our Fifth Biennial Member Juried Exhibition, Strokin' VI!

Because of the sheer size of the Chicagoland area and the fact that we have members scattered throughout the city and suburbs we make an effort to move the venues for our exhibitions not only to accommodate our members, but to share our work with different communities.

This year we are especially beholden to The Art & Company, to Don Glassner and Lynn for hosting this event. They went out of their way to make us feel welcome!

We are grateful to our donors for their contributions and their support of our society.

We are thankful to all the members who make this event a reality.

This year we followed the precedent we set for our last member's show when we ventured outside the pastel world and into Chicago's art scene for our juror of selection and judge of awards — local but nationally known artists, Sergio Gomez and Clayton Beck III. Both attended the opening and provided us with insight and their thoughts.

I congratulate the artists whose work was accepted into this show, but I thank all our member artists for being part of this society, for painting in pastel, for coming together as a group, for supporting each other, for competing, for sharing, for striving to be better.

And as always, I thank the public, artists and art lovers for coming to view our work.

-tatijana

CPP PRESIDENT

Tatijana Jacenkiw, CPP-M

JUROR OF SELECTIONS



Photo Credit: Michael Coakles

Sergio Gomez

Sergio Gomez was among the first group of artists who moved to the

Zhou B Art Center and started Third Fridays in the Fall of 2004. Currently, he is Curator/Director of Exhibitions at the Zhou B Art Center, Owner/Director of 33 Contemporary Art Gallery and coaches artists to excel in their art careers. Sergio has curated a number of important exhibitions including ten years of "The National Self-Portrait Exhibition," "Chicago's Twelve," and "National Wet Paint MFA Biennial."

www.virtualartist.com

JUDGE OF AWARDS



Clayton J. Beck III

After graduation from the American Academy of Art in Chicago, Clayton

studied at the Palette and Chisel Academy of Fine Arts with Richard Schmid. Clayton's career began while still at the American Academy, exhibiting at Jody Kirberger's Talisman Gallery and winning awards from the Midwest Pastel Society, the Palette & Chisel, and the Pastel Society of America. He conducts classes at the Palette & Chisel Academy on a regular basis and is a Master member of the American Impressionist Society.

www.claytonbeck.com

ABOUT THE SHOW

Our Sixth Biennial Member Juried Exhibition, Strokin' VI!, was another smashing success with 52 members submitting 142 images for jurying. Our juror of selections chose 50 works from 32 artists, with the exhibit hosted by the Art & Company Design Center in Orland Park, Illinois.

This leads me to my first thank you. Donald Glassner and Lynn Imperiale at Art & Company were tireless in their effort to make this show awesome, from hanging to homemade refreshments! Also big shout-outs go to Tatijana Jacenkiw, Evelyn Brody, Dotty Carrangi, and all the volunteers that without their never-ending help this exhibition doesn't happen. And above all, enormous congratulations to all the accepted members! Their incredible work displayed the high caliber of professionalism needed to show that pastels belong as a viable medium in Chicago's art community.

Artistically yours,

EXHIBITION CHAIR

Mike Barret Kolasinski, CPP-M

PARTICIPATING ARTISTS



DARLENE BOCK
Lindenhurst, IL
Deirdra Reading
24 x 18 \$650



EVELYN BRODY
Chicago, IL
Enlightenment
18 x 24 \$2000



DOTTY CARRINGI
Cary, IL
Bon Voyage
16 x 12 \$900



SUSANNE CLARK
Viroqua, WI
Head of the Table
14.5 x 14.5 \$750



EVELYN BRODY
Chicago, IL
Blue Bus
22 x 16 \$2000



DOTTY CARRINGI
Cary, IL
Mia at Eleven
16 x 12 \$1200



DOTTY CARRINGI
Cary, IL
Masterworks
9.5 x 6 \$350



KRISTIN DIVERS
Wexford, PA
Phoenix Theatre Rising
20 x 16 \$800

PARTICIPATING ARTISTS



GAIL FABER
Rockford, IL
Cat Therapy
8.5 x 12 \$600



JESSICA FINE
Chicago, IL
Anxious
15 x 13 \$1100



TED FUKA
Mokena, IL
Fallen Bark
16 x 13.5 \$1000



WILL GERMINO
Palos Park, IL
Michigan Ave Bus
7 x 5 \$240



REVEN FELLARS
Chicago, IL
Poppy Pasture
9 x 12 \$350



JESSICA FINE
Chicago, IL
Crossing
14 x 11.5 \$1100



WILL GERMINO
Palos Park, IL
Dueling Sails
8 x 10 \$325



WILL GERMINO
Palos Park, IL
*St Vincent DePaul
From Fremont*
10 x 8 \$325

PARTICIPATING ARTISTS



SUE GOMBUS
Merrillville, IN
Boys Will Be Boys
12 x 12 \$1000



TOM HEFLIN
Rockford, IL
Whisper Lake
10 x 13 \$1500



MIKE BARRET KOLASINSKI
Chicago, IL
Upon Further Reflection
20 x 16 \$1200



MICHAEL LATALA
Skokie, IL
Katlyn
22 x 16 \$1300



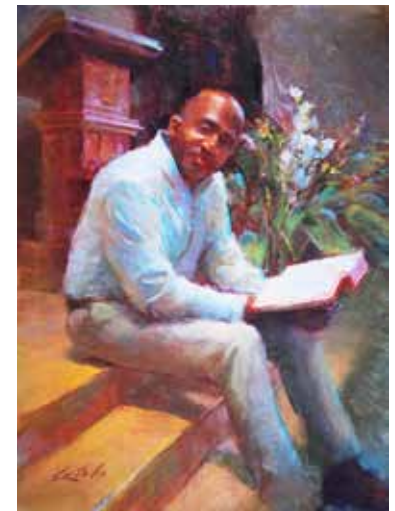
MIKE BARRET KOLASINSKI
Chicago, IL
FlowEdge
6 x 24 \$800



TOM HEFLIN
Rockford, IL
Galena Hills
21 x 29 \$3000



MICHAEL LATALA
Skokie, IL
Courtney
16 x 12 \$1000



MICHAEL LATALA
Skokie, IL
Pastor Ray
24 x 18 \$1600

PARTICIPATING ARTISTS



CHRISTINE LEONE
Olympia Fields, IL
Erin Elizabeth
10 x 14 \$900



DAVID LEVENSON
Chicago, IL
Into The City
29 x 43
2400



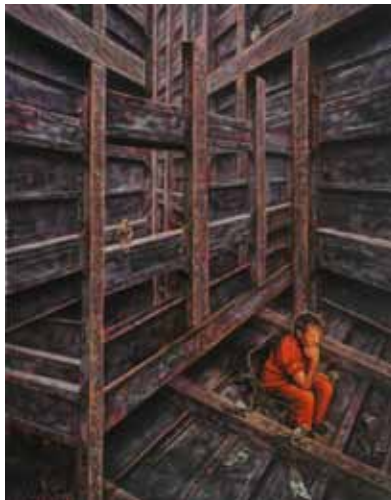
MIGUEL MALAGON
Chicago, IL
Kneeling
19 x 15 \$800



NANCIE KING MERTZ
Chicago, IL
Moments At The Met – Impressions
21.5 x 8.25 \$1490



CHRISTINE LEONE
Olympia Fields, IL
Gracious Bounty
12 x 18 \$1200



DAVID LEVENSON
Chicago, IL
The Thinker
35 x 32 \$1800



NANCIE KING MERTZ
Chicago, IL
Cuba's Inner Beauty
42 x 30 \$3600



DIANA MITCHELL
Wheaton, IL
Walla Walla Vineyard
11 x 15 \$1200

PARTICIPATING ARTISTS



KATHLEEN NEWMAN
Palos Park, IL
Break
12 x 16 \$1200



MARYANN NOWAK
Tinley Park, IL
Pondering the Future
10 x 13 \$300



ELLEN ROTTSOLK
Wheaton, IL
African Woman
17 x 12 \$1200



BRIAN SAUERLAND
Palatine, IL
Radiance
12 x 16 \$895



KATHLEEN NEWMAN
Palos Park, IL
Early Snow
12 x 16 \$1200



MARYANN NOWAK
Tinley Park, IL
The Sky Is the Limit
11 x 14 \$300



DON RYAN
Carol Stream, IL
Cannonball
13 x 10.5 \$900



JULIE SKODA
Western Springs, IL
Content
12 x 12 \$1100

PARTICIPATING ARTISTS



JULIE SKODA
Western Springs, IL
Rolling In
12 x 12 \$900



STELLA SOLLIDAY
Orland Park, IL
Light Patterns
12 x 12 \$450



MARY LYNN SULLIVAN
Downers Grove, IL
Santa Fe Café
8 x 8 \$2500



ARLENE TARPEY
Glenview, IL
Down the Path 2
14 x 12 \$500



STELLA SOLLIDAY
Orland Park, IL
Best Foot Forward
11 x 14 \$450



MARY LYNN SULLIVAN
Downers Grove, IL
Red Pajamas
8 x 8 \$3500



RUSSELL SUP
LaGrange, IL
Fall At The Arboretum
6 x 12 \$600



MARY ANN TRZYNA
Frankfort, IL
Positive, Negative 3
16 x 10 \$390



LIZ WALL
Palos Park, IL
The Boathouse
12 x 12 \$500



MARIKAY PETER WITLOCK
Chicago Heights, IL
Water's Edge #40
15 x 15 \$1550

AWARD WINNERS

BEST OF SHOW

Red Pajamas – Mary Lynn Sullivan

AWARD OF EXCELLENCE

Whisper Lake – Tom Heflin, CPP

**CHICAGO PASTEL PAINTERS–
WUNDERLAND AWARD**

Pastor Ray – Michael Latala, CPP-M

BLICK ART MATERIALS AWARD

Water's Edge #40 – Marikay Peter Witlock

**ART DE TRIUMPH & ARTFUL
FRAMER STUDIOS AWARD**

Down the Path 2 – Arlene Tarpey

**MIKE AND KATHIE NEWMAN–
PRISMACOLOR AWARD**

Positive, Negative 3 – Mary Ann Trzyna

**JACK RICHESON & COMPANY–
PALETTE & CHISEL AWARD**

Kneeling – Miguel Malagon, CPP

APPLE FRAME STUDIO AWARD

Upon Further Reflection – Mike Barret Kolasinski, CPP-M

**OLD TOWN TRIANGLE ART
CENTER–PRISMACOLOR
AWARD**

Cuba's Inner Beauty – Nancie King Mertz, CPP-M

**JACK RICHESON & COMPANY–
PRISMACOLOR AWARD**

The Thinker – David Levenson

**JACK RICHESON & COMPANY
AWARD**

Radiance – Brian Sauerland, CPP-M

**CHICAGO BOTANIC GARDEN–
PRISMACOLOR AWARD**

Gracious Beauty – Christine Leone, CPP-D

**MORTON ARBORETUM–
PRISMACOLOR AWARD**

Fall at the Arboretum – Russell Sup

**CHICAGO PASTEL PAINTERS–
PRISMACOLOR AWARD**

Blue Bus – Evelyn Brody, CPP

**CHICAGO PASTEL PAINTERS–
PRISMACOLOR AWARD**

Mia at Eleven – Dotty Carringi, CPP

**CHICAGO PASTEL PAINTERS–
PRISMACOLOR AWARD**

Early Snow – Kathleen Newman, CPP-M



Scenes from the reception and award ceremony of the CPP Strokin' VI! exhibition at Art and Company on September 30, 2016.



www.ChicagoPastelPainters.org